



**2021** United Nations Decade  
**2030** of Ocean Science  
for Sustainable Development

# The 2nd World Congress of Marine Stations

**27-29 November 2024**  
**Shizuoka, Japan**



# **The 2nd World Congress of Marine Stations**

November 27-29th, 2024

GRANSHIP Shizuoka Convention & Arts Centre  
Shizuoka, Japan

## **Contents**

Welcome Address	1
Congress Overview	3
Venue & Access	4
Preparing for Presentations	12
Streaming and Recording of Presentations	13
Instruction for Online Participation	13
Social Media Policy	14
Other Information	14
Useful Links	14
Schedule	15
Program	16
Sponsorship	23
Organizing Committee	24

## Welcome address

**Dear WCMS participants,**

**Welcome** to Shizuoka and the first congress of the World Association of Marine Stations to be held in person (the first meeting in 2021 took place during Covid and had to be moved online). This is a great opportunity therefore not just to find out what is happening with marine stations and networks across the globe but also to connect with one another and build foundations for the next stage of WAMS. Marine Stations are a unique resource and a global network of marine stations has the potential to mobilise capacity to meet some of the key ocean challenges of our time.

I would like to thank all those who are contributing to this workshop, the Local Organising Committee and our sponsors. I hope you enjoy the congress and your visit to Shizuoka and look forward to future collaborations!

Matt Frost

Chair, World Association of Marine Stations.



**As** a representative of the Local Organizing Committee, I am delighted to welcome you all here in Shizuoka, Japan, for the first in-person congress of the World Association of Marine Stations, WCMS2024. Marine stations have a rich history, originating as gathering places for scientists to observe and discuss marine life. Like those in Europe and the United States, Japan's marine stations were established long ago. Despite being a small island nation, Japan now has around 80 university-affiliated marine stations, which have significantly contributed to marine biology education and research.

Historically, marine station researchers have collaborated individually and sometimes internationally between two or more stations. However, a functional worldwide association did not exist until the foundation of WAMS in 2010. When you look at the *Atlas*, you'll see that there are over 800 marine stations globally. As our planet faces numerous challenges, international collaboration among marine stations worldwide, each situated along coastlines, holds profound significance. The *Atlas of Marine Stations* was launched long after the initial proposal, and I hope that WCMS2024 plays a role in bringing together people from marine stations featured in the *Atlas*. I hope that this congress offers a valuable opportunity for colleagues to connect face-to-face, engage in vibrant discussions about our shared future, and explore the rich culture of Japan.

Kazuo Inaba

Chair, Local Organizing Committee of WCMS2024



## The World Association of Marine Stations (WAMS)

The purpose of World Association of Marine Stations (WAMS) is to provide a forum for marine stations from all regions of the world to establish inclusive partnerships and strengthen collaboration among marine scientists to foster marine scientific research internationally.

WAMS also enables better identification of global capacity and facilitate coordination on a range of issues from education and training to interdisciplinary research and long-term observations. This global network also provides the marine scientific community with a common voice on marine research matters and marine policy, and vitally, helps support global goals for the ocean and provide a stronger voice to champion the role of marine stations.

## Congress Overview

The 1st World Congress of Marine Stations (WCMS) in November 2021 resulted in the establishment of a new WAMS Steering Committee and the 'WAMS Communiqué', stating the importance of the world's marine stations coming together to mobilise scientific capacity to meet key scientific and environmental challenges.

The 2nd World Congress of Marine Stations being held in November 2024 in Shizuoka, Japan is bringing together speakers from a wide range of countries representing marine stations and networks. The aim of the 2nd congress is to build on the momentum established at the WCMS 2021 with key aims congress being:

- To highlight latest developments across the globe in science and outreach being undertaken at a global level and to identify opportunities for international collaboration
- To demonstrate and showcase the unique capacity of marine stations for meeting global challenges and identify opportunities for capacity building
- To further consolidate WAMS as a network through bringing together regional and other pan-national networks, agreeing and establishing new mechanisms for global networking and engagement
- To facilitate engagement with Japanese Marine Stations through site visits

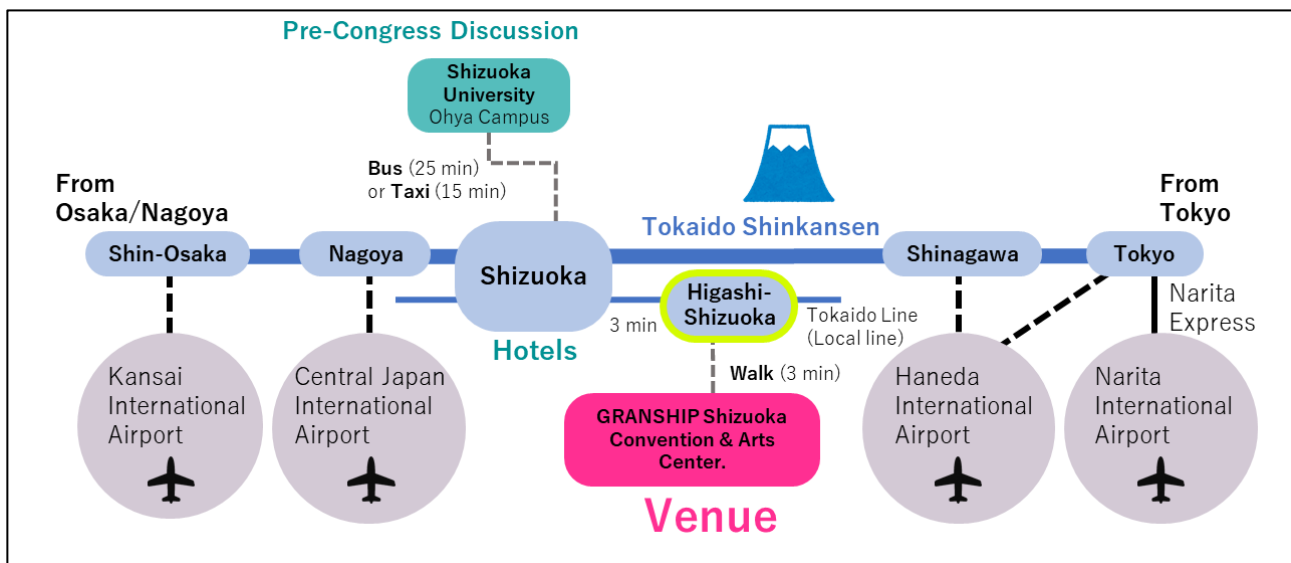
Congress Outputs will include:

- The 'WAMS Declaration' reiterating the need for global cooperation to address Ocean Challenges at a time of global instability and political division
- A conference report highlighting next steps identified at the workshop to inform an implementation plan to further establish WAMS in its role in facilitating international collaboration.
- Updated Steering Committee membership

# Venue & Access

**All meetings from November 27th:**

GRANSHIP Shizuoka Convention & Arts Centre, Conference Room 1001-2



## **1.From airports to Higashi-Shizuoka Station**

### **1-1. From Narita Airport to Higashi-Shizuoka Station**

Step 1: Narita Airport to Tokyo Station

Take the Narita Express (N'EX) from Narita Airport to Tokyo Station. The journey takes about 1 hour.

Step 2: Tokyo Station to Shizuoka Station

At Tokyo Station, transfer to the Tokaido Shinkansen (Hikari or Kodama) and travel to Shizuoka Station. The ride takes about 1 to 1.5 hours.

Step 3: Shizuoka Station to Higashi-Shizuoka Station

At Shizuoka Station, take a local JR Tokaido Line train for one stop to Higashi-Shizuoka Station. This takes about 3 minutes.

### **1-2. From Haneda Airport (with a transfer at Shinagawa) to Higashi-Shizuoka Station**

Step 1: Haneda Airport to Shinagawa Station

Take the Keikyu Line directly to Shinagawa Station. This takes about 15 minutes.

Step 2: Shinagawa Station to Shizuoka Station

At Shinagawa Station, transfer to the Tokaido Shinkansen (Hikari or Kodama) and travel to Shizuoka Station. The ride takes about 1 to 1.5 hours.

Step 3: Shizuoka Station to Higashi-Shizuoka Station

At Shizuoka Station, take a local JR Tokaido Line train for one stop to Higashi-Shizuoka Station. This takes about 3 minutes.

### **1-3. From Chubu Centrair International Airport to Higashi-Shizuoka Station**

Step 1: Chubu Centrair International Airport to Nagoya Station

Take the Meitetsu Line from the airport to Nagoya Station. The trip takes about 30 minutes.

Step 2: Nagoya Station to Shizuoka Station

At Nagoya Station, transfer to the Tokaido Shinkansen (Hikari or Kodama) and travel to Shizuoka Station. The journey takes about 1 hour.

Step 3: Shizuoka Station to Higashi-Shizuoka Station

At Shizuoka Station, take a local JR Tokaido Line train for one stop to Higashi-Shizuoka Station. This takes about 3 minutes.



#### **1-4. From Kansai International Airport to Higashi-Shizuoka Station**

Step 1: Kansai International Airport to Shin-Osaka Station

Take the JR Haruka Limited Express or the Kansai Airport Rapid Service to Shin-Osaka Station. This takes about 1 hour.

Step 2: Shin-Osaka Station to Shizuoka Station

At Shin-Osaka Station, transfer to the Tokaido Shinkansen (Hikari or Kodama) and travel to Shizuoka Station. The ride takes about 2 hours.

Step 3: Shizuoka Station to Higashi-Shizuoka Station

At Shizuoka Station, take a local JR Tokaido Line train for one stop to Higashi-Shizuoka Station. This takes about 3 minutes.

#### **2. From Shizuoka Station to Higashi-Shizuoka Station**

Most participants will be staying at hotels near Shizuoka Station and making daily trips between Shizuoka Station and Higashi-Shizuoka Station. There are mainly two ways to pay for these trips.

1. Purchase tickets at a vending machine or from a ticket office at the stations for each trip.
2. Purchase a prepaid rechargeable transportation IC card at airports or stations. The IC card can also be used for the bus ride to Shizuoka University, the venue of the pre-congress discussion.

Example: "Welcome SUICA" can be purchased at Narita Airport, Haneda Airport, and major train stations in Tokyo.

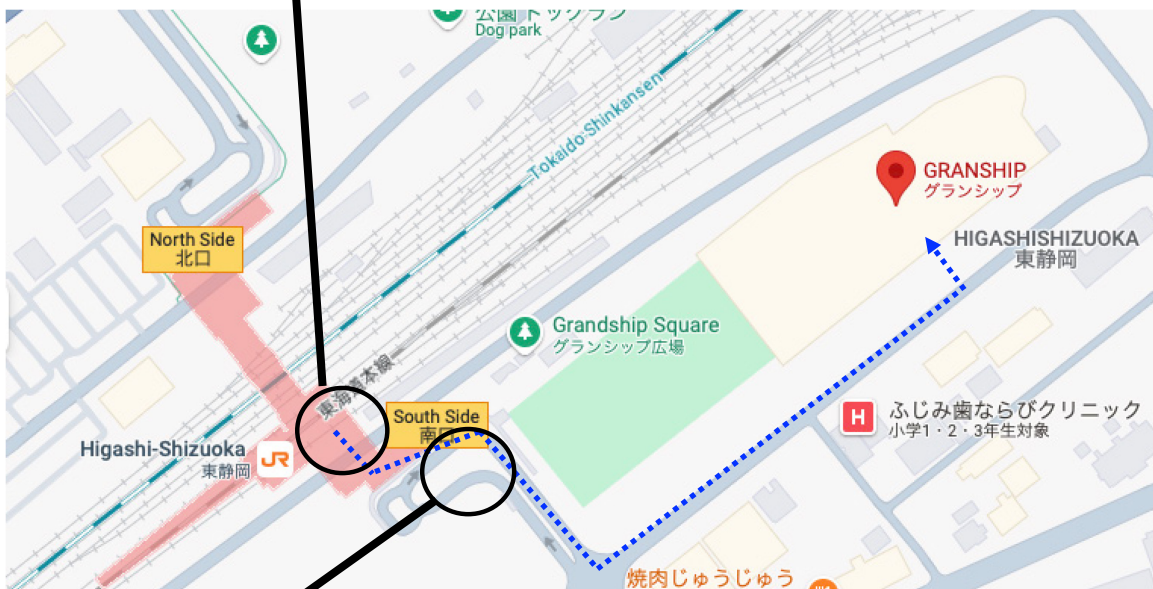
<https://www.jreast.co.jp/multi/en/welcomesuica/welcomesuica.html>

### 3. From Higashi-Shizuoka Station to GRANSHIP

Step 1: Use the South Side Exit at Higashi-Shizuoka Station.

Step 2: After descending the stairs at the South Side Exit, turn right along the street.

Step 3: Turn left at the traffic light, continue along the street and you will find the main entrance on your left. The walk from the station to GRANSHIP takes about 5 minutes.

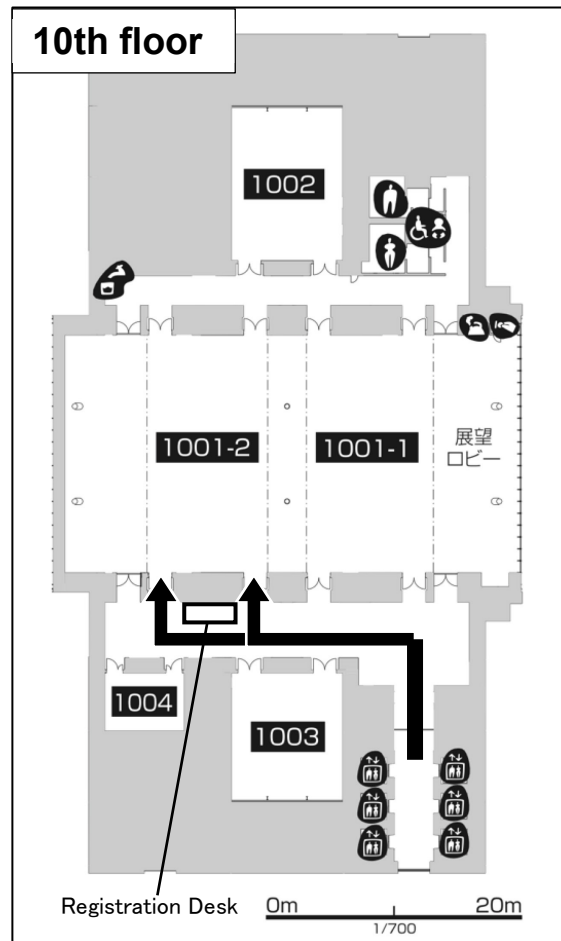
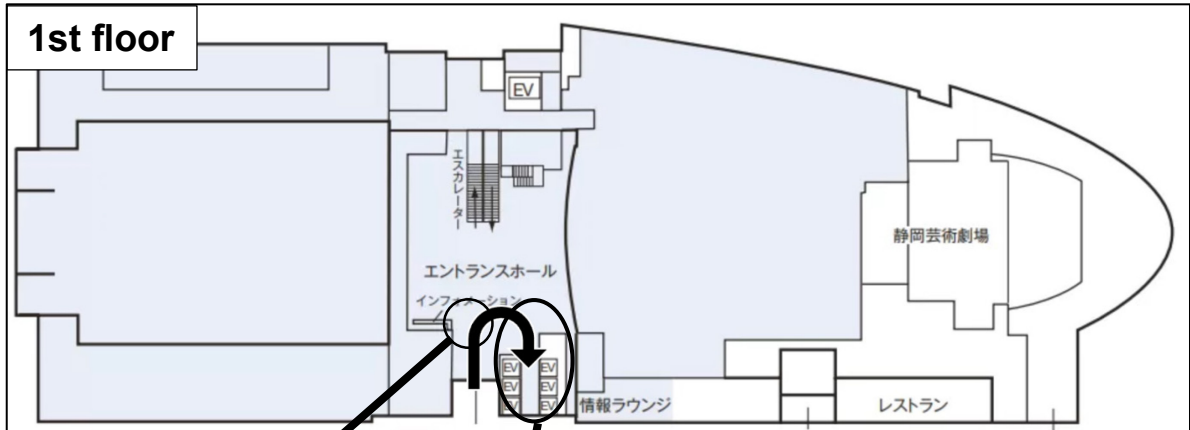


#### 4. Inside GRANSHIP Shizuoka Convention & Arts Centre

Step 1: After entering from the main entrance, turn right and follow the signs to the elevators.

Step 2: Take the elevator to the 10th floor.

Step 3: At the 10th floor, follow the signs to Conference Room 1001-2.



## **Pre-congress discussion on November 26th:**

Shizuoka University Ohya Campus, Faculty of Agriculture, Joint Research Laboratory, Lecture room 2

Address: 836 Ohya, Suruga-ku, Shizuoka-shi, Shizuoka, Japan

### **From Shizuoka station to Shizuoka University**

#### 1. From Shizuoka Station to the Bus Stop

After arriving at Shizuoka Station, exit through the North Exit (Kitaguchi).

Walk to the bus terminal located just outside the North Exit.

#### 2. Taking the Bus to Shizuoka University

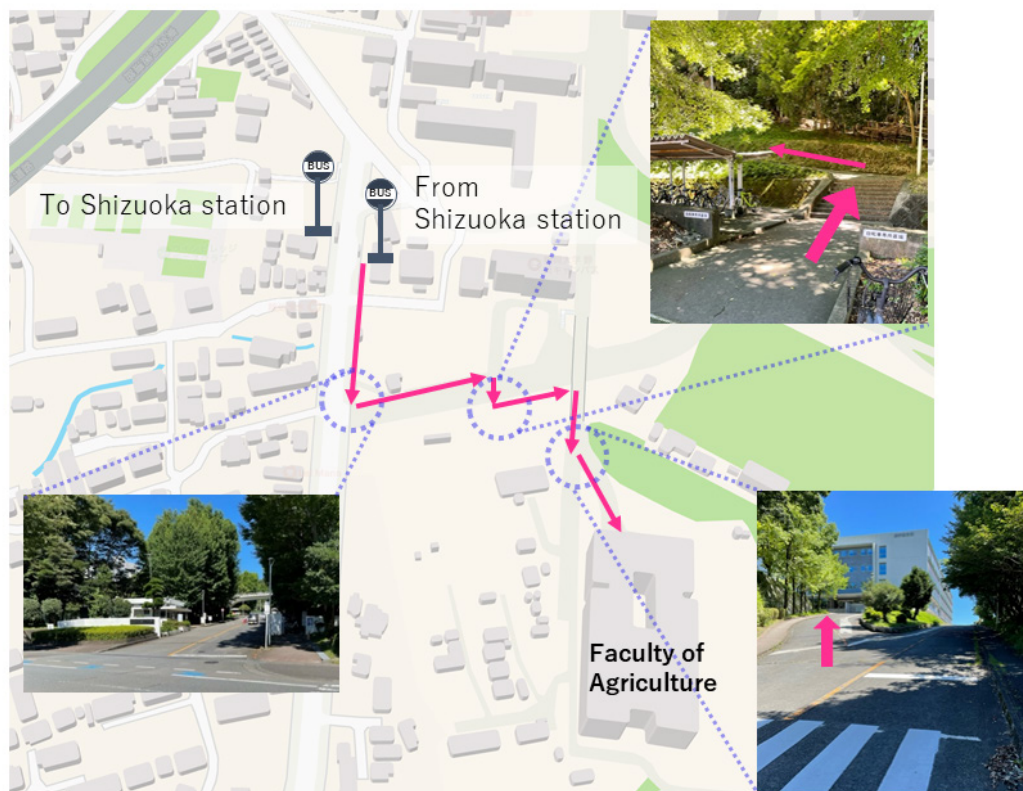
Look for Bus Stop 8B.

Take a bus bound for Shizuoka University. The main buses going to the university are:

Bus bound for "Shizuoka Daigaku" (静岡大学)

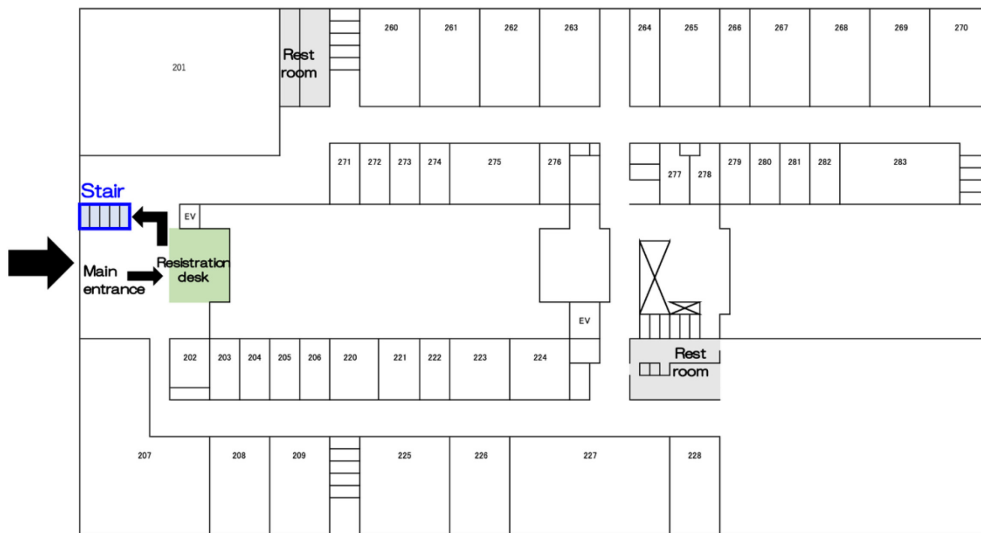
#### 3. Riding the Bus

The bus ride takes about 20-25 minutes. Get off at the Shizuoka Daigaku (静岡大学) stop.

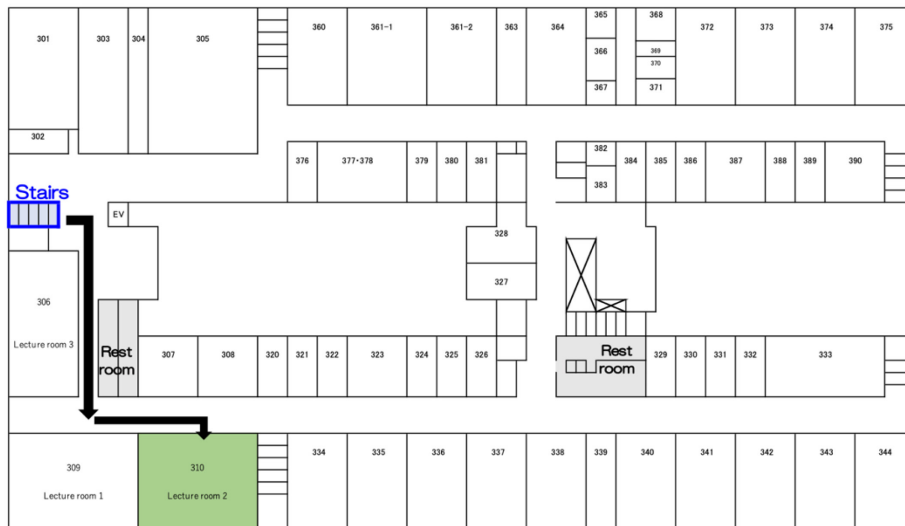


There will be a reception desk just inside the main entrance. Go up one floor and the meeting will be held at Lecture room 2.

### Faculty of Agriculture Building 2nd floor



### Faculty of Agriculture Building 3rd floor



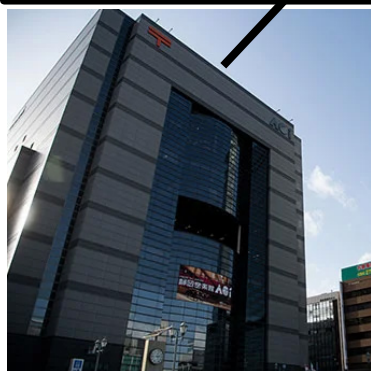
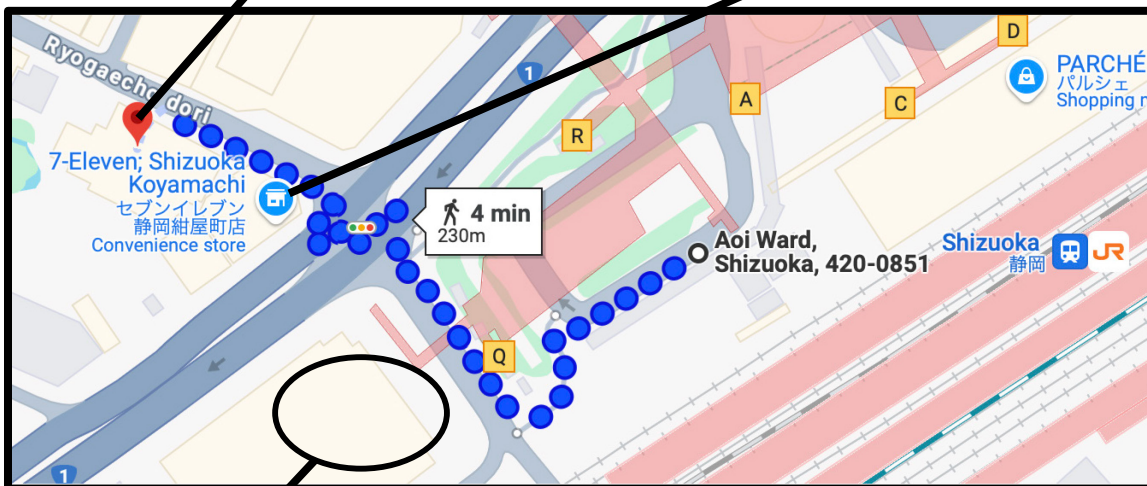
## Conference Dinner on November 29th:

Fugetsuro (浮月楼)

Address: 11-1 Konyacho, Aoi Ward, Shizuoka City, Shizuoka, Japan

### From Shizuoka station to Fugetsuro

1. Start from the North Exit of Shizuoka Station
2. Walk toward Concert Hall Shizuoka AOI
3. Cross the National Route 1 to Seven-Eleven
4. Continue along the street (Ryogaecho-dori, 両替町通り) and you will find the entrance gate



Concert Hall Shizuoka AOI

## Preparing for Oral Presentations

- You can use your own PC or one that we provide (Windows 11 and Mac).
- Screen aspect ratio is 16:9.
- The Secretariat will prepare an HDMI PC cable connector. If your PC is not compatible with this cable connector, please bring a suitable adaptor.
- Please bring your AC adapter and converter with you.
- Please bring your presentation's backup data on a USB flash drive.
- Please notify the operator in advance if you will be using video or audio in your presentation.
- Please show the logos of WCMS2024 and UN Decade of Ocean Science for Sustainable Development (2021-2030) on your first slide.
- Please test your slides with the operator during the below time:
  - Presentations in the morning: 17:30-18:00 on the day before, or 8:45-9:00 on the day of your presentation
  - Presentations in the afternoon: 13:00-13:30 on the day of your presentation

## Preparing for Poster Presentations

- Prepare your poster to fit on the poster board (W90cm x H180cm). Recommended poster size is A0 size (W841mm×H1189mm).
- Please use the poster board indicated with your poster number.
- Prepare one slide to introduce your poster. The submitted slides will be displayed on screen during the Flash Talk; you will have three minutes to introduce your poster. Slides should be created as PDF files in 16:9 ratio and emailed to [wcms2024japan@gmail.com](mailto:wcms2024japan@gmail.com) by November 15th. If the file size exceeds 10 MB, it may not be received. Please contact us in that case.
- Please show the logos of WCMS2024 and UN Decade of Ocean Science for Sustainable Development (2021-2030) on your poster.
- Posters can be put up from 16:00 on November 27th. Please take them down before 13:00 on November 29th.
- We will provide pushpins for putting up the posters.

## **Streaming and Recording of Presentations**

- All oral presentations and poster flash talks will be streamed online to registered participants.
- Please note that all oral presentations and poster flash talks will be recorded, with a possibility of limited on-demand distribution.

## **Instruction for Online Participation**

Opening ceremony on Day 1, Sessions 1-4 on Days 2 and 3, Special Session and Flash Talk on Day 2

### Registering for the Zoom Meeting

1. We will send the Registration Link only to those who have paid for online participation.
2. Register for Zoom Meeting using the same name and email address as those used for congress registration. We will approve the registration and send the link to the Zoom site, Meeting ID, and Passcode after confirming that registration is made with the registered name and email address.
3. Make sure to register before 23:59 on November 26th, Japan time.

### Joining the Zoom Meeting

1. Make sure to use the latest version of Zoom application and software.
2. Switch off video when entering Zoom.
3. We will shut off Chat, Voice, and Recording function during the meetings.



## Social Media Policy

During WCMS2024, many presentations will feature novel research that is not yet published, and we respect the presenters' right to request that their work not be photographed, recorded, and/or shared across social media. Please make it clear during the talks if any data, research plans or other information need to be kept confidential.

There are no restrictions on dissemination, so we encourage participants to share information about WCMS2024 through their social media accounts. It is the responsibility of the participants to acquire appropriate permission to publish any photographs that feature other participants.

Please note that some images might be taken during the event by the organisers to be used on WCMS, WAMS, and JAMBIO website and social media. Please contact [wcms2024japan@gmail.com](mailto:wcms2024japan@gmail.com) if you do not give consent to appear on any photos published by the event.

## Other Information

- Free WiFi is available at GRANSHIP Shizuoka Convention & Arts Centre. The necessary password will be posted on-site.
- There are lockers at GRANSHIP that you can use with a 100 yen coin. The coin will be returned after use.
- Smoking is prohibited within GRANSHIP. Please use the designated smoking areas outside.

## Useful Links

- The 2nd World Congress of Marine Stations  
<https://sites.google.com/view/wcms2024japan/>
- GRANSHIP Shizuoka Convention & Arts Centre (Congress venue)  
<https://www.granship.or.jp.e.abr.hp.transer.com/visitors/>
- Faculty of Agriculture, Ohya Campus, Shizuoka University (Pre-congress discussion)  
<https://www.shizuoka.ac.jp/english/access/>
- Fugetsuro (Conference Dinner, November 29th)  
<https://fugetsuro.co.jp/facility/ryotei/>

# Schedule

	Nov. 26th	Nov. 27th	Nov. 28th	Nov. 29th	Nov. 30th	Dec. 1st
9:00			09:00-09:40 Session 1: WAMS: Overview and updates	09:00-11:50 Session 4: Marine stations and global policy		
10:00						
11:00		09:40-12:15 Session 2: Marine stations and global research capacity				
12:00						
13:00						
14:00				13:00 15:00 WAMS Steering Committee Meeting		
15:00			13:30-15:50 Session 3: Realising Dohrn's vision		Satellite site visit to Japanese Marine Stations	Satellite site visit to Japanese Marine Stations
16:00	15:00 – 17:00 Round-table pre-congress discussion		16:10 16:35 Special Session			
17:00			16:35 17:30 Flash Talk (Poster)			
18:00		18:00-18:30 Networking / Opening	17:30 – 19:00 Poster Session			
19:00		18:30-20:30 Icebreaker				
20:00				19:00 21:00 Conference Dinner		
21:00						

# Program

## Tuesday 26<sup>th</sup> November

15:00 – 17:00 **Round-table pre-congress discussion**  
(Faculty of Agriculture, Ohya Campus, Shizuoka University)

“Why do we need a Global marine stations network”?  
(CHAIR: Matt Frost, Chair, World Association of Marine Stations, Plymouth Marine Laboratory, UK)

**Background:** The proposal for a World Association of Marine Stations was unanimously endorsed by the IOC and supporting regional and global networks in 2010. Since then, the urgency to support capacity building to address global ocean challenges has increased. This session is an open discussion on current and potential future needs and drivers for a WAMS. We will also discuss the often asked question – what is the definition of a Marine Station in the 21<sup>st</sup> century?

## Wednesday 27<sup>th</sup> November

09:00 – 18:00 Free time for networking & regional groups meetings  
16:00 onwards: Registration (GRANSHIP Shizuoka Convention & Arts Centre)

**Networking / Opening**  
(CHAIR: Kazuo Inaba, University of Tsukuba, Japan)

18:00 – 18:05 Opening address  
*Kazuo Inaba (Chair, JAMBIO/ University of Tsukuba, Japan)*

18:05 – 18:30 Welcome address  
*Vidar Helgesen (Executive Secretary of the UNESCO-IOC, Video message)*  
*Nobuyoshi Shiojiri (Vice-President, Shizuoka University, Japan)*  
*Matt Frost (Chair, WAMS/ Plymouth Marine Laboratory, UK)*

18:30 – 20:30: Icebreaker (with light meals and drinks)

## **Thursday 28<sup>th</sup> November**

(GRANSHIP Shizuoka Convention & Arts Centre, Conference Room 1001-2)

\* Entrance into GRANSHIP is possible only after 08:45

### **Session 1: World Association of Marine Stations: Overview and updates (CHAIR: Jani Tanzil, National University of Singapore, Singapore)**

09:00 – 09:15

1. The World Association of Marine Stations (WAMS): overview and history  
*Matt Frost (Chair, WAMS / Plymouth Marine Laboratory, UK)*

09:15 – 09:40

2. WAMS and the Global Atlas of Marine Stations: updates and next steps  
*Kazuo Inaba (JAMBIO/ University of Tsukuba, Japan)*  
*Anna Gebruk (WAMS Secretary/ University of Edinburgh, UK)*

### **Session 2: Marine stations and global research capacity (CHAIR: Anna Gebruk, University of Edinburgh, UK)**

09:40 – 11:10 (15 min x 6 Talks)

1. WAMS as an opportunity for small scale cooperation or do we have global projects ahead?  
*Alexander Tzetlin (Lomonosov Mocsow State University, Russia)*
2. MBON & ML2030: Linking tight networks of marine scientists and practitioners for promoting marine biodiversity monitoring, research and conservation  
*Masahiro Nakaoka (Hokkaido University, Japan)*
3. IHCantabria: Multidisciplinary Approaches to the Study of Socio-Ecological Coastal Systems  
*José A. Juanes (Universidad de Cantabria, Spain)*
4. St. John's Island National Marine Laboratory: Singapore's National Research Infrastructure for Marine Science R&D  
*Jani Tanzil (National University of Singapore, Singapore)*
5. Enhancing Marine Research through Regional Collaboration: Okinawa's Role in a Global Network  
*Shannon McMahon (Okinawa Institute of Science and Technology, Japan)*
6. 125 Years (Nearly) of the Dove Marine Laboratory: Past, Present and Future  
*Heather Sugden (Newcastle University, UK)*

11:10 – 11:25 Break

11:25 – 12:15 Plenary discussion and Q&A with panel members:

“What makes marine stations unique in terms of capacity?”

“How do we mobilise this capacity, particularly in and for the global south?”

“What are the upcoming opportunities for international collaboration for research and other activities?”

12:15 – 13:30 Lunch (Japanese lunchbox provided)

### **Session 3: Realising Dohrn’s vision**

**- Marine stations as contributing to regional and global networks**

**(CHAIR: Sean Rogers, Bamfield Research Station, Canada)**

13:30 – 15:15 (15 min x 7 Talks)

1. ANEMONE Global: Advancing eDNA-Based Aquatic Biodiversity Monitoring on a Global Scale

*Imane Sioud (Tohoku University, Japan)*

2. One-Health Observatory Lighthouse in a little Bay in the Southern Bay of Biscay connected to the world through a database and the European Marine Biological Resource Centre (EMBRC)

*Ibon Cancio (University of the Basque Country, Spain)*

3. Collaboration of Tara Océan with Marine Station: A Success Story

*Sylvain Agostini (University of Tsukuba, Japan)*

4. Transforming relationships with the ocean through science at Canada’s Bamfield Marine Sciences Centre – towards a new frontier for ocean science

*Sean Michael Rogers (Western Canadian Universities Marine Sciences Society, Canada)*

5. T-SMART: National Marine Station for Subtropical Estuary-Bay-Coast Continuum Ecosystem

*Bangqin Huang (Xiamen University, China)*

6. Commitment to mobility is key to achieve excellence- Lessons from the Centre for Marine Biology of the University of São Paulo (CEBIMar/USP)

*Augusto A. V. Flores (University of São Paulo, Brazil)*

7. The Scottish Oceans Institute – Expanding Research Capabilities and Impact through the MASTS (Marine Alliance for Science and Technology for Scotland) Regional Network

*Julie N. Oswald (University of St Andrews, UK)*

15:15 – 15:50 Plenary discussion with Q&A panel members:  
“How do we network stations at the national to regional level (challenges and opportunities)?”  
“What funding mechanisms are available and what are the examples of best practice?”  
“How can WAMS help network stations at the global level (challenges and opportunities)?”  
“How should WAMS link to and support other global networks?”

15:50 – 16:10 Break

### **Special Session**

**(CHAIR: Takako Saito, Shizuoka University, Japan; Kogiku Shiba, University of Tsukuba, Japan)**

16:10 – 16:20

#### **Promotional Talk from Principal Sponsor**

Marine Open Innovation (MaOI) Project from Shizuoka, Japan  
- The Sustainable Development of Blue Economy with Ocean Science –  
*Takashi Gojobori (Director in General, Marine Open Innovation Institute, Japan/ Distinguished Professor Emeritus of Bioscience, King Abdullah University of Science and Technology “KAUST”)*

16:20 – 16:35

#### **Marine Station Management: Lessons from Disasters**

After Picking Up the Pieces: Tsunami Damage and Rebuilding of Onagawa Field Center, Tohoku University  
*Minoru Ikeda (Tohoku University, Japan)*

16:35 – 17:30

**Flash Talk (Poster)** (3 min x 16 posters)

### **Group Photo**

17:30 – 19:00 **Poster Session**

1. The Littoral Station of Aguda in North Portugal – 25 Years of Education and Research  
*Mike Weber (Littoral Station of Aguda, Portugal)*
2. EMBRC-Spain: two marine stations and a bank of algae sailing the waters of European research infrastructures  
*Ibon Cancio (University of the Basque Country, Spain)*

3. Okinawa Institute of Science and Technology (OIST) Marine Science Station as a Portal of Regional and International Marine Science Network  
*Nobuo Ueda (Okinawa Institute of Science and Technology, Japan)*
4. Japanese Association for Marine Biology (JAMBIO): a scientific community from "on-site" fronts covering Japanese marine coast  
*Kazuo Inaba (University of Tsukuba, Japan)*
5. Aniva Marine Biological Station: Advancing Ecological Research in Sakhalin's Unique Biomes  
*Aleksandr Semenov (Lomonosov Moscow State University, Russia)*
6. Northwest Florida NaGISA Program: A Thriving Example of Community Collaboration and Student Leadership - Establishing a Framework for Future Program Enhancement  
*Jocelyn Wheeler, Noah Stickler  
(NaGISA NW Florida/Niceville High School, USA)*
7. Monitoring the Coastal Biodiversity Modulation along the Sandy Beaches of the Northwest Florida Gulf Coast  
*Hannah Castor, Sasha McCraine  
(NaGISA NW Florida/Niceville High School, USA)*
8. ECIMAT Marine Station, a facility for Genomic Monitoring in Marine Biodiversity: Insights from ARMS  
*Jesus Souza Troncoso (University of Vigo, Spain)*
9. Environmental DNA Monitoring of Japanese Coastal Waters through Cooperation among Marine Stations  
*Masa-aki Yoshida (Shimane University, Japan)*
10. Coastal Socio-Ecological System Dynamics in Response to the 2011 Tohoku Earthquake and Subsequent Tsunami  
*Toyonobu Fujii (Tohoku University, Japan)*
11. Comprehensive Identification and Analysis of Genetic Polymorphisms Regulating Self/Nonself-Recognition in Fertilization  
*Hanazaki Kana (Shizuoka University, Japan)*
12. Isolation and Structure Determination of a New Antibacterial Lanthipeptide Derived from the Marine-Derived Bacterium *Lysinibacillus* sp. CTST325  
*Thetsana Chanaphat (Shizuoka University, Japan)*
13. Characteristics of microplastics in different matrices in Jiaozhou Bay, China  
*Shan Zheng (Institute of Oceanology, Chinese Academy of Sciences, China)*

14. Benthic ecosystem may control jellyfish bloom  
*Song Sun (Institute of Oceanology, Chinese Academy of Sciences, China)*

15. Long-term changes and ocean health assessment at a typical coastal ecosystem of Jiaozhou Bay, China  
*Xiaoxia Sun (Institute of Oceanology, Chinese Academy of Sciences, China)*

## **Friday 29<sup>th</sup> November**

(GRANSHIP Shizuoka Convention & Arts Centre, Conference Room 1001-2)

\* Entrance into GRANSHIP is possible only after 08:45

### **Session 4: Marine stations and global policy (CHAIR: Neil Davies, University of California Berkeley, USA)**

09:00 – 09:20

#### **Plenary Lecture:**

1. Deep-sea Marine Protected Areas and Biodiversity Monitoring  
*Katsunori Fujikura (JAMSTEC, Japan)*

09:20 – 11:50 (15 min x 6 Talks)

2. International collaboration in support of the global ocean agenda: The World Association of Marine Stations (WAMS)  
*Matt Frost (Plymouth Marine Laboratory, UK)*

3. WAMS Fair Ocean Journal: Operationalizing FAIR and CARE Data Principles in coastal communities worldwide  
*Neil Davies (University of California Berkeley, USA)*

4. JAMBIO Coastal Organisms Joint Surveys: A network of marine stations and researchers exploring the Japanese coastal biota  
*Hiroaki Nakano (University of Tsukuba, Japan)*

5. Taking the Pulse of the Global Ocean: An Overview of the Partnership for Observation of the Global Ocean  
*Jan Mees (POGO/VLIZ, Belgium)*

6. Developing an Ocean Science STEM Hub for the West Coast of Scotland  
*Axel E J Miller (Scottish Association for Marine Science)*

7. The NWF NaGISA Program as a Blueprint for Scientific Outreach  
*Lillian Suttlemyre, Craig Falzone, Jacob Milz, Julia Milz  
(NaGISA NW Florida/Niceville High School, USA)*

10:50 – 11:10 Break



11:10 – 11:50 Plenary discussion with Q&A panel members:  
“What would WAMS as an implementing partner for the UN Decade look like?”  
“How can WAMS support global policy including the BBNJ, the achievement of the SDGs and other targets under CBD?”

11:50 –12:00 Closing remarks

12:00 – 13:00 Lunch (Japanese lunchbox provided)

13:00 – 15:00 **WAMS Steering Committee Meeting**

15:00 – 19:00 Free afternoon / networking time

19:00 – 21:00 **Conference Dinner (‘Fugetsuro’)**  
<https://fugetsuro.co.jp/facility/ryotei/>

## **Saturday 30<sup>th</sup> November**

### **Satellite site visit to Japanese Marine Stations**

Three marine stations will accept visitors for a half-day to 2 days tour after the congress. These visits are for pre-registered participants only.

1. Tateyama station, The Field Science Center of Tokyo University of Marine Science and Technology

<https://jambio.jp/en/member/tokyokaiyo/>

2. Shimoda Marine Research Center, University of Tsukuba

<https://jambio.jp/en/member/tsukubashimoda/>

3. Mukaishima station, Marine Biological Laboratory, Blue Innovation Division, Seto Inland Sea Carbon-neutral Research Center, Hiroshima University

<https://jambio.jp/en/member/hiroshima/>

# **The 2nd World Congress of Marine Stations**

## **Sponsors and Supporters**

### **Sponsors :**

Marine Open Innovation Institute (MaOI)

SURUGA Marketing & Tourism Bureau

Tara Ocean Foundation

The Zoological Society of Japan (ZSJ)

University of Tsukuba

Japanese Association for Marine Biology (JAMBIO)

### **Supporters :**

World Association of Marine Stations (WAMS)

Science Council of Japan (SCJ)

Plymouth Marine Laboratory (PML)

Shizuoka University

Hiroshima University

Tokyo University of Marine Science and Technology

Tohoku University

Shimoda Marine Research Center (SMRC), University of Tsukuba

# **The 2nd World Congress of Marine Stations**

## **Organizing Committee**

### **Local Organizing Committee**

Kazuo Inaba (Chair, JAMBIO / University of Tsukuba)

Gaku Kumano (Tohoku University)

Takako Saito (Shizuoka University)

Hiroaki Nakano (University of Tsukuba)

Sylvain Agostini (University of Tsukuba)

Kogiku Shiba (University of Tsukuba)

Fujiko Tsuchiya (JAMBIO)

### **WAMS Management Group**

Matt Frost (Chair, Plymouth Marine Laboratory)

Anna Gebruk (Secretary, University of Edinburgh)

Alexander Tzetlin

(Pertsov White Sea Biological Station of Lomonosov Moscow State University)

Axel Miller (Scottish Association of Marine Science)

Yi Wang

(The National Ocean Technology Center (NOTC) / Ministry of Natural

Resources, China)

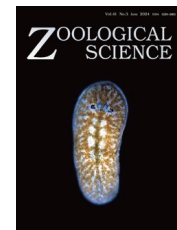
Amy Watson (WAMS Secretariat assistant)

Kazuo Inaba (University of Tsukuba)

### **Contact**

wcms2024japan@gmail.com (Local organizing committee, WCMS2024)

WAMS@pml.ac.uk (WAMS Secretariat)



*University of Tsukuba*

